

C-Flo Lite[®]

Multi Material Heater



Bryant Dental Product



Dentistry, reimagined.

Contents.

- | | | | |
|-----|--------------------|-----|---------------------|
| 04. | The BD story | 16. | Safety instructions |
| 06. | The C-Flo story | 19. | Take a tour |
| 08. | C-Flo instructions | 22. | Get in touch |
| 10. | Lite | 23. | BD x Husti |
| 12. | Power supply | | |
| 13. | Technical | | |
| 14. | Repair | | |
| 15. | Warranty | | |



The BD story.



Dr Connor Bryant
CEO and Founder



Dr Priyam Patel
Co CEO

Bryant Dental was created by dentists to solve clinical problems they themselves had faced, by using technology in unprecedented ways.

Since our incorporation, we have grown exponentially, thanks to our community of passionate, talented dentists who believe, like us, that dentistry can be done differently.

Inspired by clinicians who strive for brilliance, we aim to bring the latest innovation and technology to extraordinary dentists to facilitate their pursuit of excellence.

C-Flo | medicar | Ignis | Lucidum | MagStrap™

Ozmo | Nomic | Refractives | HALO | iShields

The C-Flo story.



More than a composite heater.

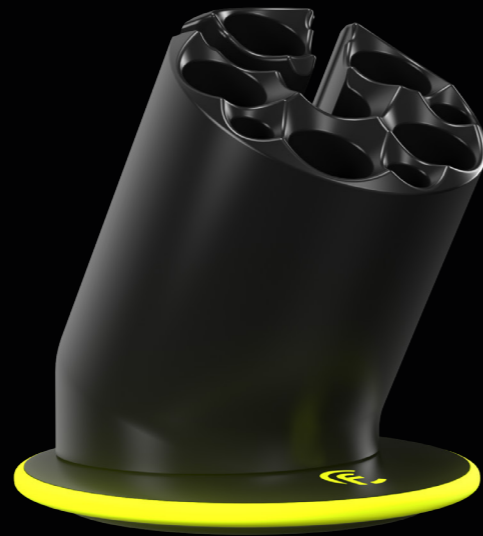
C-Flo is a one-stop solution for better, longer lasting fillings, more effective root canal treatments, and painless anaesthesia, giving you the adaptability to constantly achieve your most outstanding work.

C-Flo Lite instructions.

Intended use: C-Flo is a material heating device that is used to heat composite, local anaesthetic (LA) and sodium hypochlorite. The device is designed to be used by qualified dental professionals, including, but not limited to, dentists and dental hygienists. C-Flo must be used with the attachments provided.

What's included

- x1 C-Flo Lite Base
- x1 Power supply unit
- x1 Indicator tag



1 Getting started

Insert the USB-C power cable into the C-Flo base.



Please position the C-Flo Pro on a surface so that the power supply is readily accessible to allow it to be disconnected easily if required.

2 Switch ON

Touch and release the C-Flo logo.



3 Changing temperature

To change the temperature quickly touch the C-Flo logo on the base. The unit will change colour with each touch. Stop when the desired colour/temperature is active.

			
	39°C	45°C	55°C
LA	8 mins	9.5 mins	13 mins

LA: Local anesthetics

Please note: Heating times (+/-10%) & temperatures (+/-0,5°C) may vary depending on environmental conditions.

4 Switch OFF

Hold down the C-Flo logo for 3 seconds until the LED light turns OFF.

C-Flo Lite.

C-Flo Lite has the capacity to work in ways that suit you, holding a range and number of materials. With a high density alloy acting as an efficient & conductive heat sink.

Temperature guide



39°C

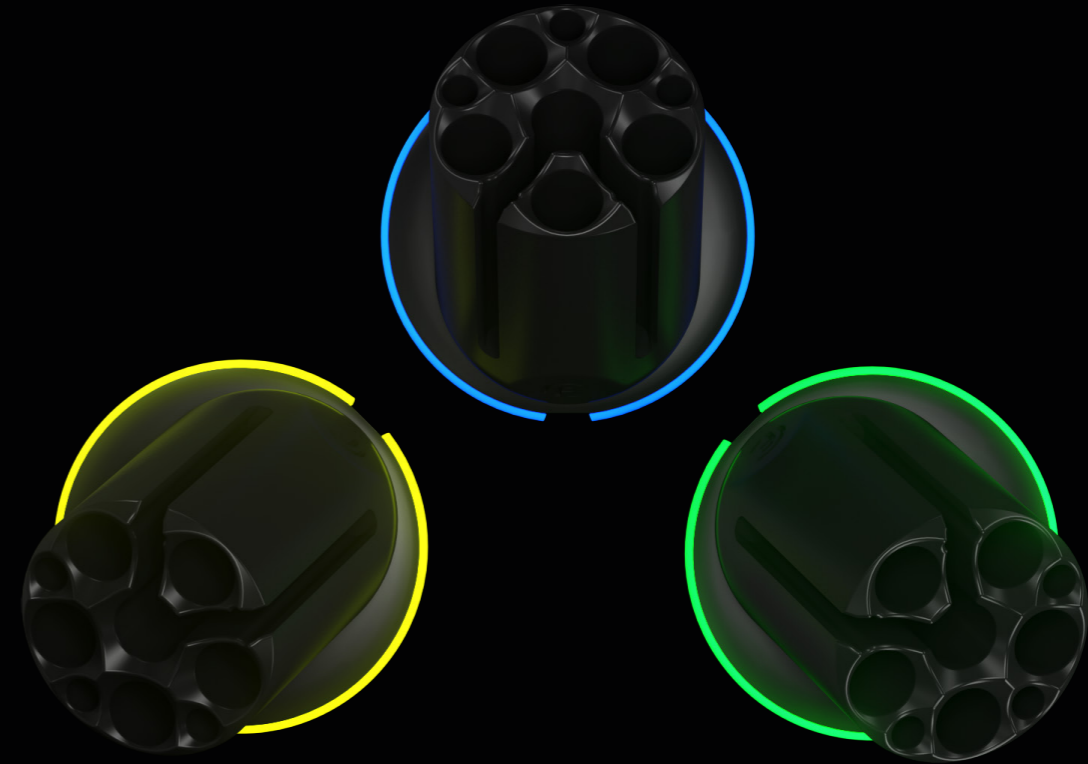
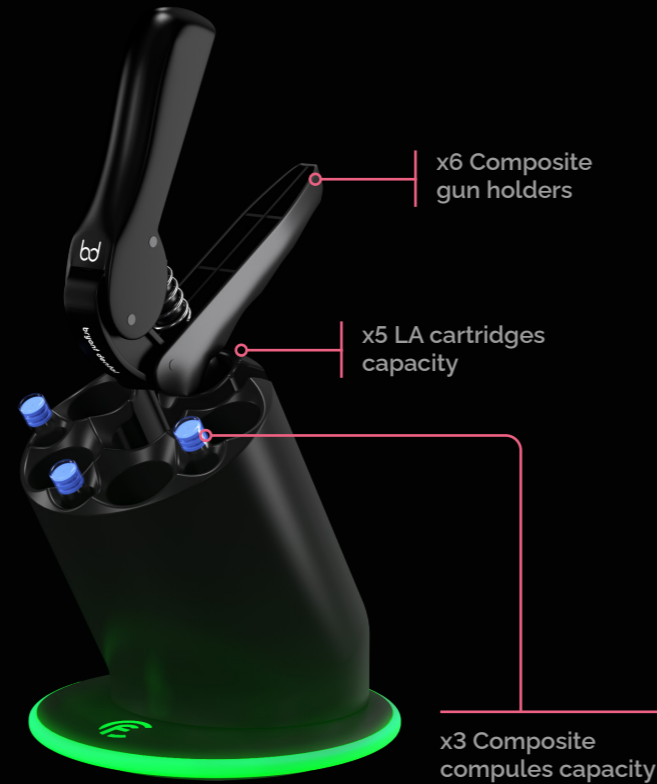
LA cartridges only

45°C

Composites and hypochlorite

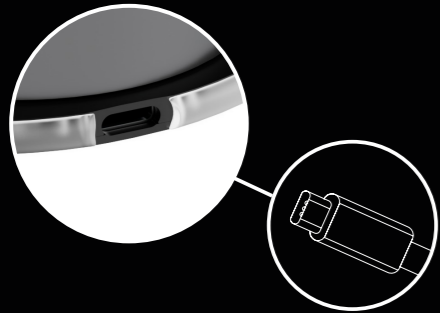
55°C

Composites and hypochlorite



Power supply.

It's important to use the official mains adaptor that has been provided, at all times. Using third-party adaptors can affect the product's performance and its warranty.



Technical.

Specification

Heating time for each temperature	See table
Temperature fluctuation variance	+/- 0.5°C
IPX rated	IPX 0
Adverse reactions	None Known
Storage temperature	0-40°C
Operating temperature	0-30°C
Input power	12V --- 4A
Output power	100-240V-50/60Hz 1.5A
Voltage fluctuations	100-240Hz-50/60Hz 9V-15V --- 0.01-5.00A@48W






Only use supplied charging plug.



Item gets very hot risk of burning.

Environmental Operating Conditions

Relative humidity	30-75%
Atmospheric pressure	70.0 kPa to 106.0 kPa
Environment	Indoor use only
Altitude	Up to 3000m
Polution	Degree 2

			
	39°C	45°C	55°C
LA	8 mins	9.5 mins	13 mins

LA: Local anesthetics

Repairs.

Accidental damage

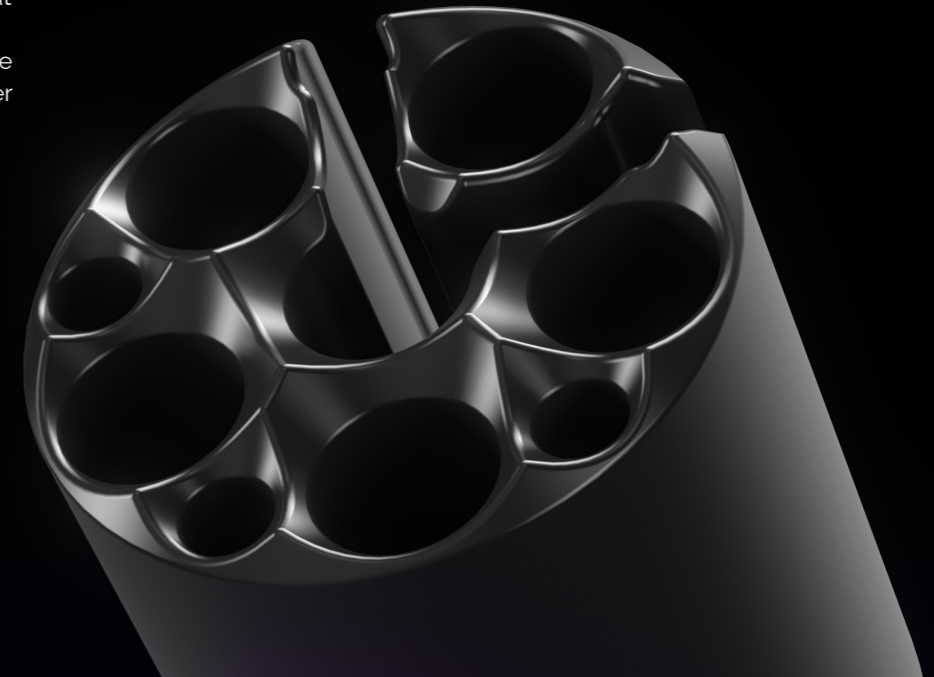
1. **Safely return:** Please let us, or your local Bryant Dental distributor know as soon as possible so we can work out how best to support you in the interim.
2. **Inspection & repair:** Our engineers will inspect the damage and, carry out a root cause analysis and repair or replace the damaged parts.
3. **Return & swap:** Once repaired, we will ask you to confirm a delivery address and ship your C-Flo back to you.

Please note: If damage is not covered by Warranty you will be advised of any costs before hand.

Warranty.













Limited liability policy

Bryant Dental will repair any C-Flo issue arising from a manufacturing defect for a period of 2 years, without charge. The liability will not exceed the amount you originally paid for the product. The warranty does not cover defects arising from negligence, product modification, unauthorised repairs, accidental damage, theft, loss or acts of God.



Safety instructions.

Conditions

-  Only use power supply provided. Use of any other power supply may cause harm and will invalidate the warranty.
-  Do not immerse the C-Flo in water.
-  If problems occur with the unit, return to Bryant Dental for repair, attempting to repair yourself will void the warranty.
-  Do not change or modify any of the existing components without authorisation from Bryant Dental.
-  Do not leave the unit on without supervision.
-  Always follow manufacturer instructions when deciding to heat a material.
-  Take care when touching the surfaces during and after use as they may be hot.
-  C-Flo is not to be autoclaved, attachments may be.
-  Do not use the C-Flo power supply with any other USB-C compatible device, it may destroy the other device.
-  The C-Flo will not work as intended with other USB-C power supplies.
-  Do not use any power supply unit other than the one provided.
-  Item gets very hot risk of burning.

Troubleshooting.

Unit is not heating	Please remove the power cord and leave the device to reset for 10 seconds before re-inserting. If still not heating after this hard reset, please contact Bryant Dental.
Device not powering on	Please check and re-insert connections and ensure power is switched on.

Disposal notice.



When you plan to dispose of the device, please return to Bryant Dental for recycling.

The European Union Waste Electrical and Electronic Equipment (WEEE) Directive forbids the disposal of waste electrical and electronic equipment as unsorted municipal waste, requiring that it be collected and recycled or disposed of separately. Hazardous substances are present in electrical and electronic equipment and present potential risks to human health and the environment if disposed of in municipal landfills, which are not designed to prevent migration of substances into the soil and groundwater.

Compliant with RoHS Directive 2011/65/EU.



Take a tour at BD.

You're welcome to visit **BD HQ** and research laboratory in Virginia Water, Surrey, any time. Meet the engineers and product development teams to share your ideas of product improvements and to see where your products are made.

If you have any ideas on the next generation of smart products why not work with us to develop them. This is the 2nd generation of the dental material heater developed by BD. **Help us to develop the 3rd.**



Thank you for choosing Bryant Dental.

We believe in creating excellent products for extraordinary dentists, and we are always proud to gain a new member of our community of passionate clinicians. Join the BD club to see what other members have done with C-Flo.

Intended use

C-Flo was developed to be used by dental professionals as a medical device to heat dental materials including composite resin, sodium hypochlorite and local anaesthetic.

Get in touch.

If you have any questions or concerns, please don't hesitate to get in touch.



Scan to connect

Our 24/7 support team is always on hand if you need anything. In the first instance please contact your product specialist or local distributor, you can find their contact details on the support page of the website at www.bryant.dental/support

Our office team are also available to answer any questions you may have.

UK office contact number:

+44 (0)1932 320064

+44 (0)7990 113723

UK office address:

Bryant Dental, Hilltop Farm, Lyne Lane, Chertsey, KT16 0AW, United Kingdom

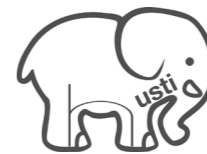
Australian office contact number:

+61(2)72089592

+61 483 835 021

Australian Office Address:

Bryant Dental, Suite 12, 13U/175 Lower Gibbes St Roseville NSW 2069, Australia



Bryant Dental x Husti.

Husti is a charity which empowers children in rural India using education and offering them tools to improve their lives. Bryant Dental are proud to partner with this cause which aims to change lives and build communities for underprivileged children.



**You have the power
to change lives.**

Find out more about the work they do here

Parts List:

Part Name	Part Code	Supplier
C-Flo® Lite	5060678495930	Bryant Dental
Power Supply Unit (Country Specific)	5060678496449	Bryant Dental

Applicable Standards:

EN 60601-1:2006+A1:2013+A12:2014
EU-MDR 2017/745

REF AXKJ-6

GTIN13 5060678495930

SN See C-Flo Lite reverse side



Follow instructions for use



This device is not sterile



Item gets very hot risk of burning



Advena Ltd. Tower Business Centre, 2nd Flr., Tower Street, Swatar, BKR 4013 Malta



Do not use if package is damaged



Do not dispose



Temperature limit



Bryant Dental, The Barns, Hilltop Farm, Lyne Lane, Chertsey, KT16 OAW



Fragile, handle with care



Keep dry

Known Contraindications: None



Meets requirements of the Medical Device Directive

📞 UK +44 (0)1932 320064 | AUS +61(2)72089592 📞 UK +44 (0)7990 113723 | AUS +61 483 835 021

Bryant Dental, The Barns, Hilltop Farm, Lyne Lane, Chertsey, KT16 OAW
C-Flo® and Bryant Dental® are registered trademarks in the United Kingdom and Australia.
Registered in England & Wales No. 10396020. Registered in Australia No. 634 752 980

IFU/UK/12.22/11